



**BRAZIL DATA CUBE**  
brazildatacube.org

**XX SBSR**  
Simposio Brasileiro de Sensoriamento Remoto

# Data Products

Rennan F. B. Marujo

**FUNDO  
AMAZONIA**

 **FUNCATE**  
Fundação de Ciência, Aplicações  
e Tecnologia Espaciais

 **BNDES**

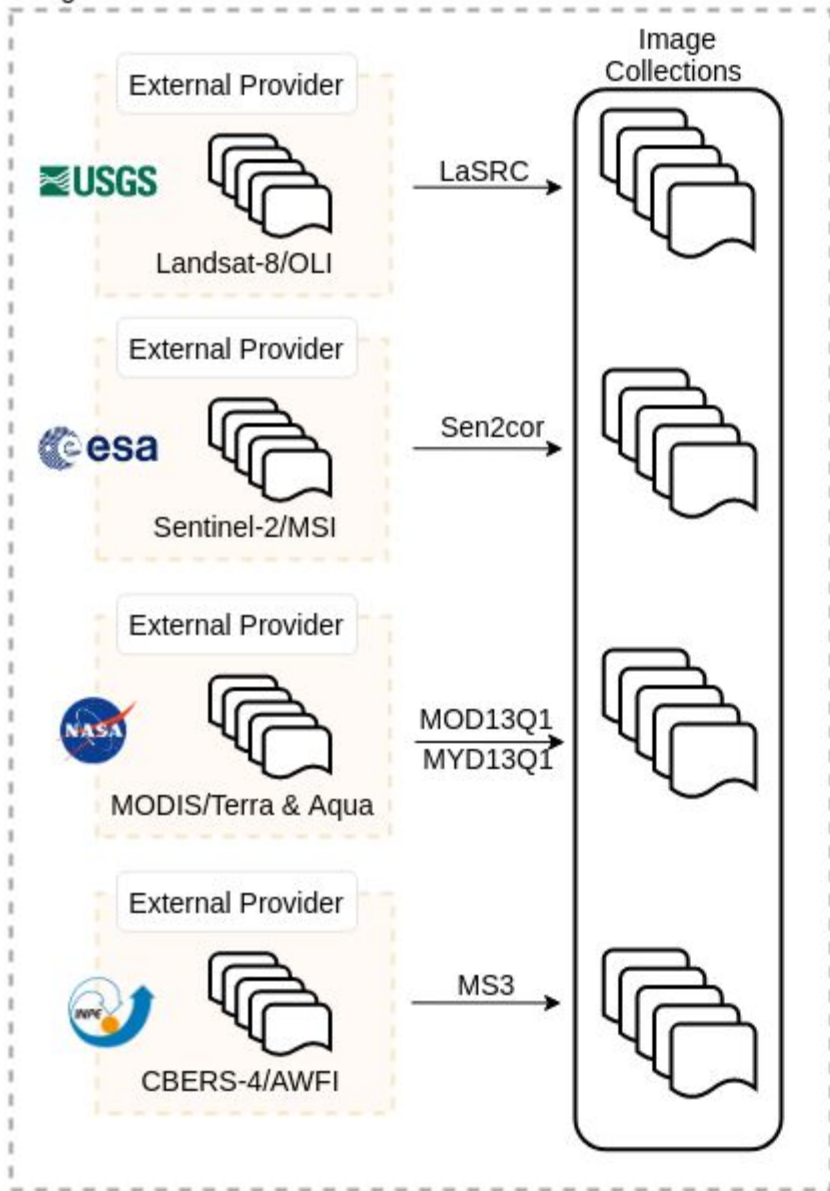


MINISTÉRIO DA  
CIÊNCIA, TECNOLOGIA  
E INOVAÇÃO

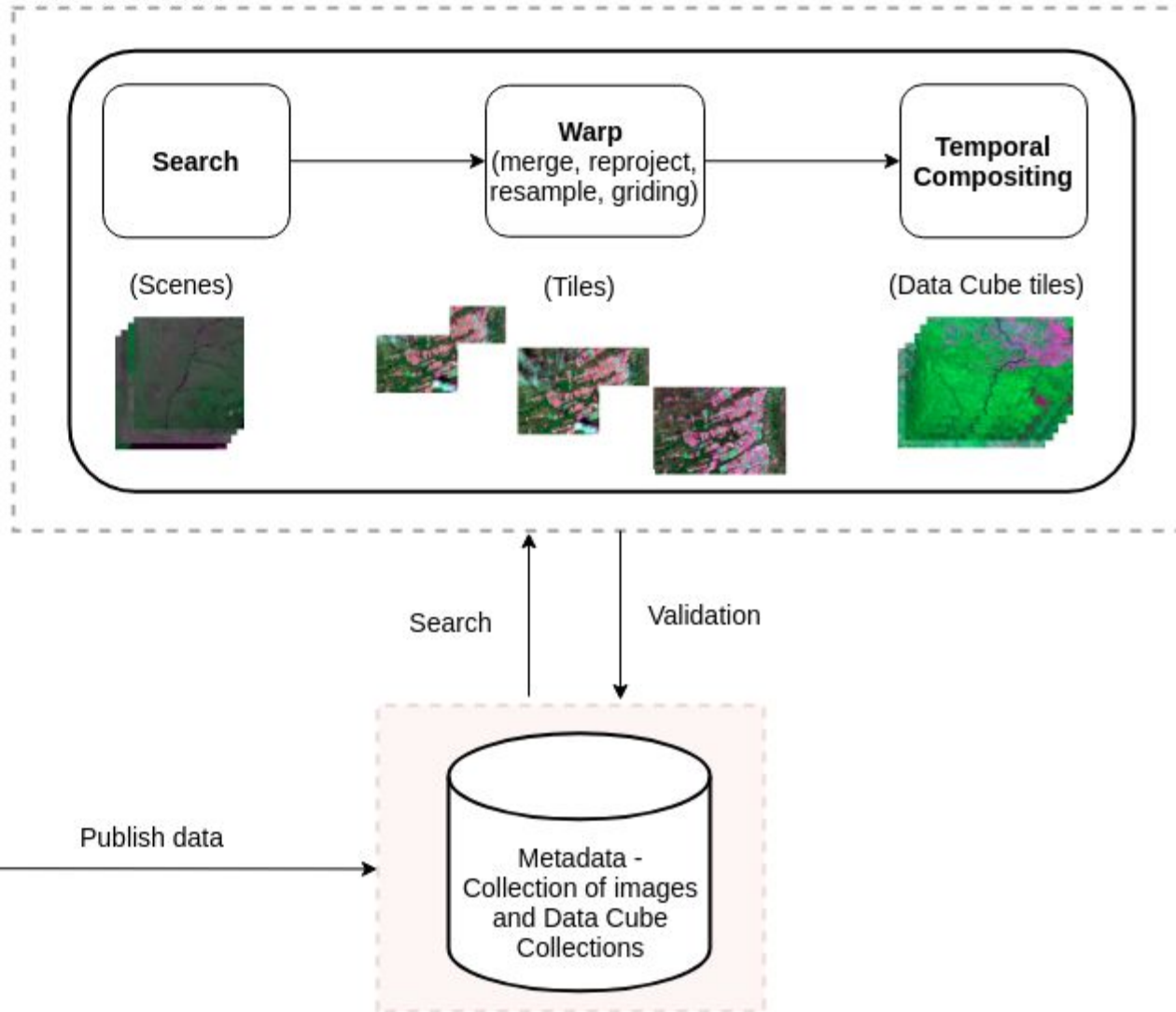
GOVERNO FEDERAL  
**BRASIL**  
UNIÃO E RECONSTRUÇÃO

# BDC ARD

## Image Collection Builder

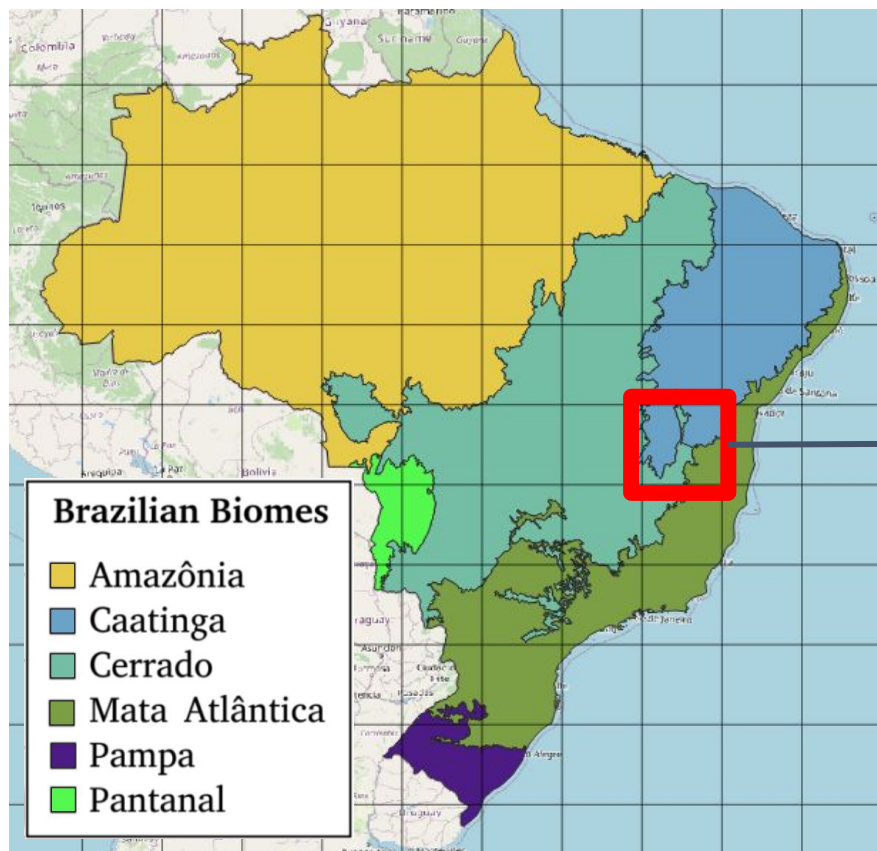


## Data Cube Builder

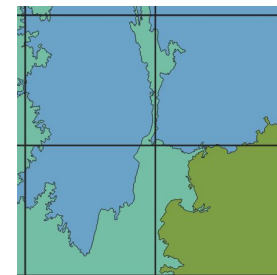


# BDC Grid (V2)

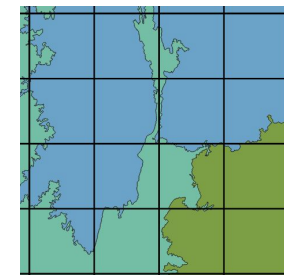
## 3 grids hierarchical system



**Grid: BDC – Large**  
**Tile size: 422400m x 422400m**



**Grid: BDC – Medium**  
**Tile size: 211200m x 211200m**

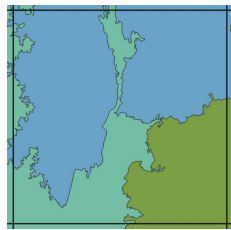
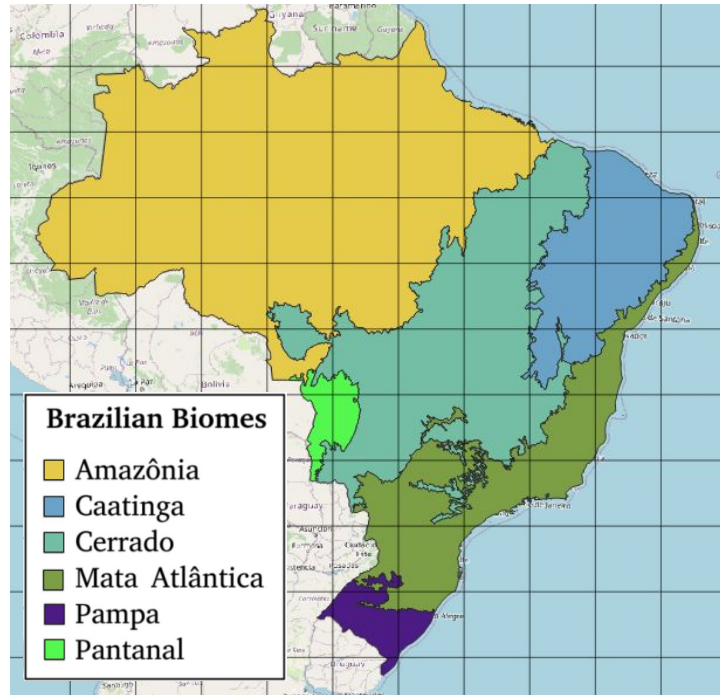


**Grid: BDC – Small**  
**Each tile: 105600m x 105600m**

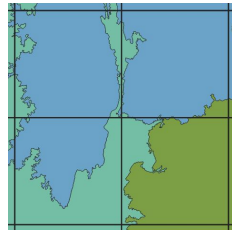
Projection: Albers equal area and Datum: SIRGAS 2000

# BDC Grid

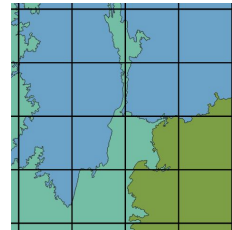
(V2)



**Grid:** BDC – Large  
**Tile size:** 422400m x 422400m

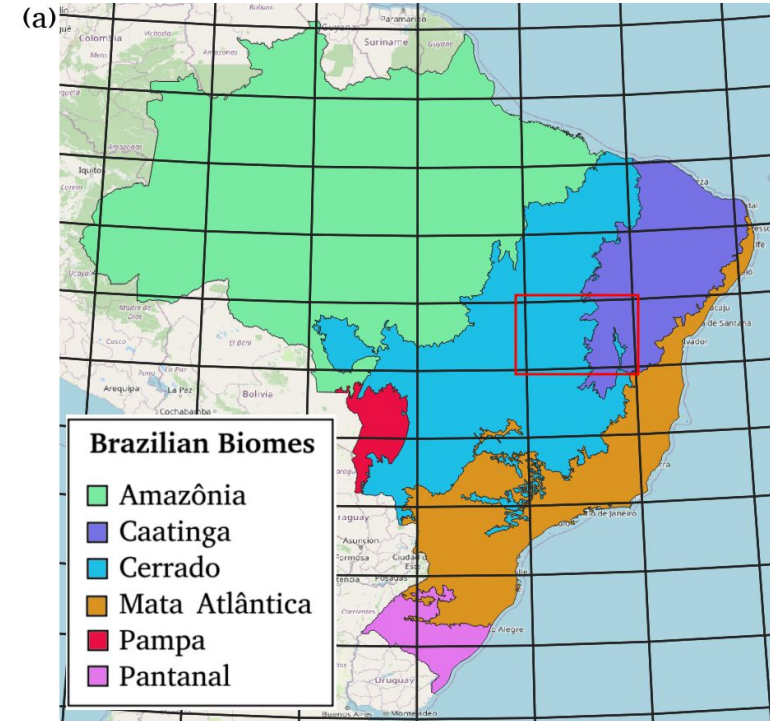


**Grid:** BDC – Medium  
**Tile size:** 211200m x 211200m

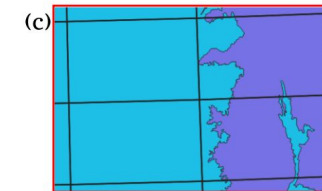


**Grid:** BDC – Small  
**Each tile:** 105600m x 105600m

(V1)



**Grid:** BDC – Large  
**Each tile:** 6 x 4°



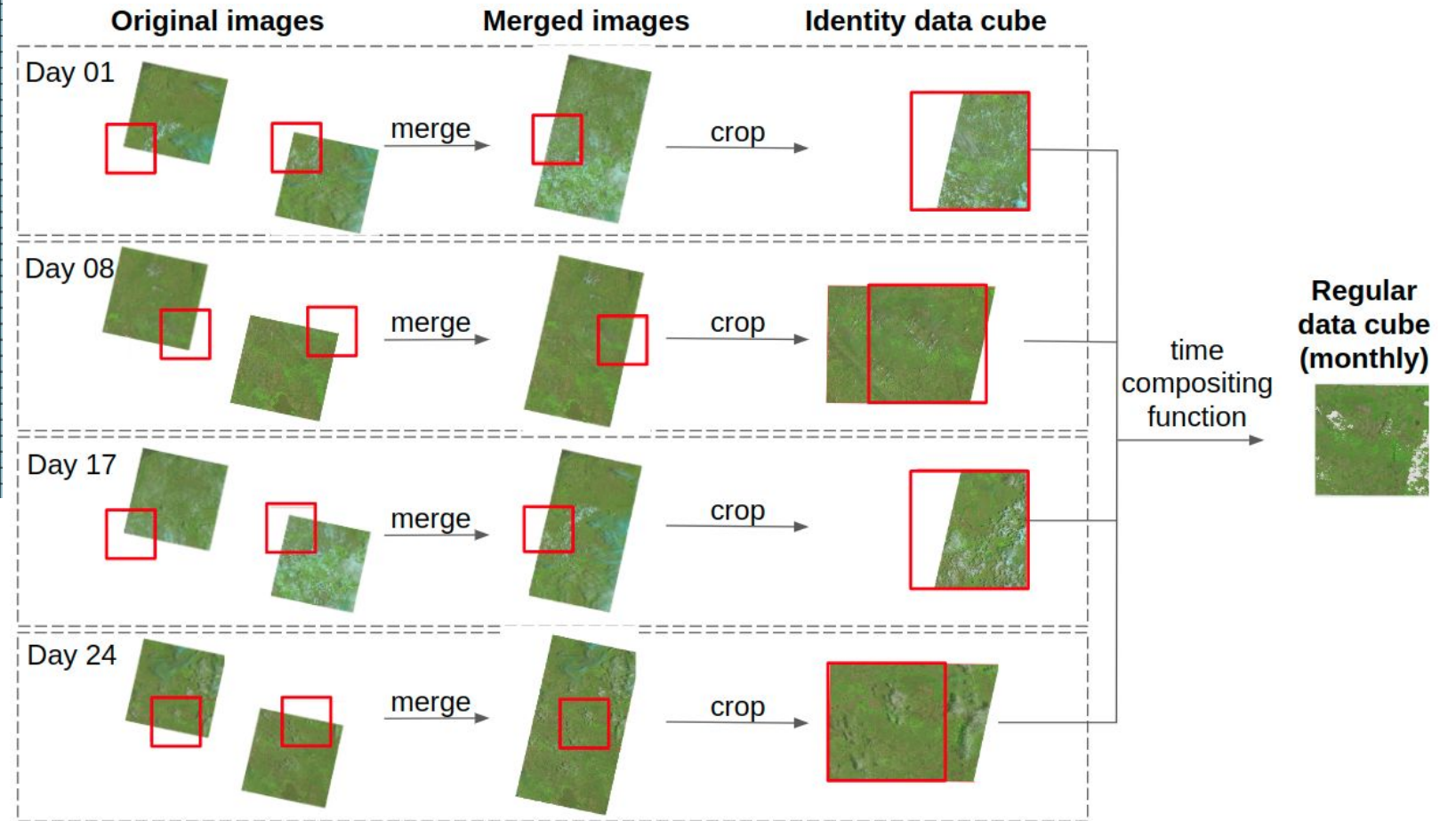
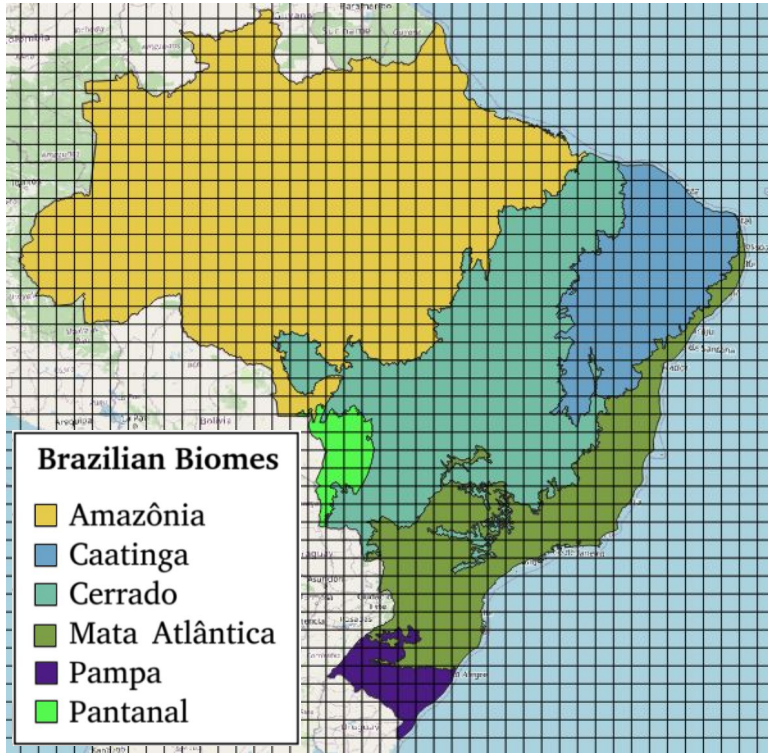
**Grid:** BDC – Medium  
**Each tile:** 3 x 2°



**Grid:** BDC – Small  
**Each tile:** 1.5 x 1°

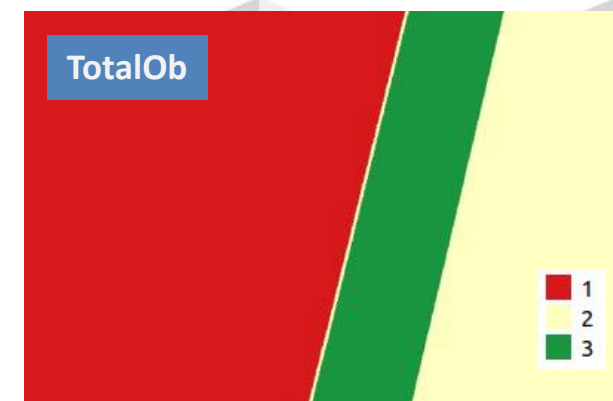
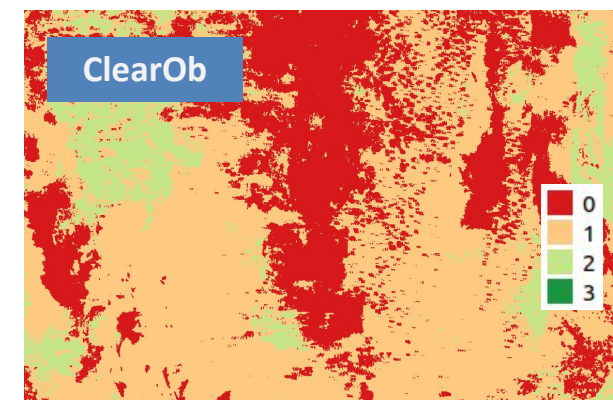
Projection: Albers equal area and Datum: SIRGAS 2000

# Data Cube Generation



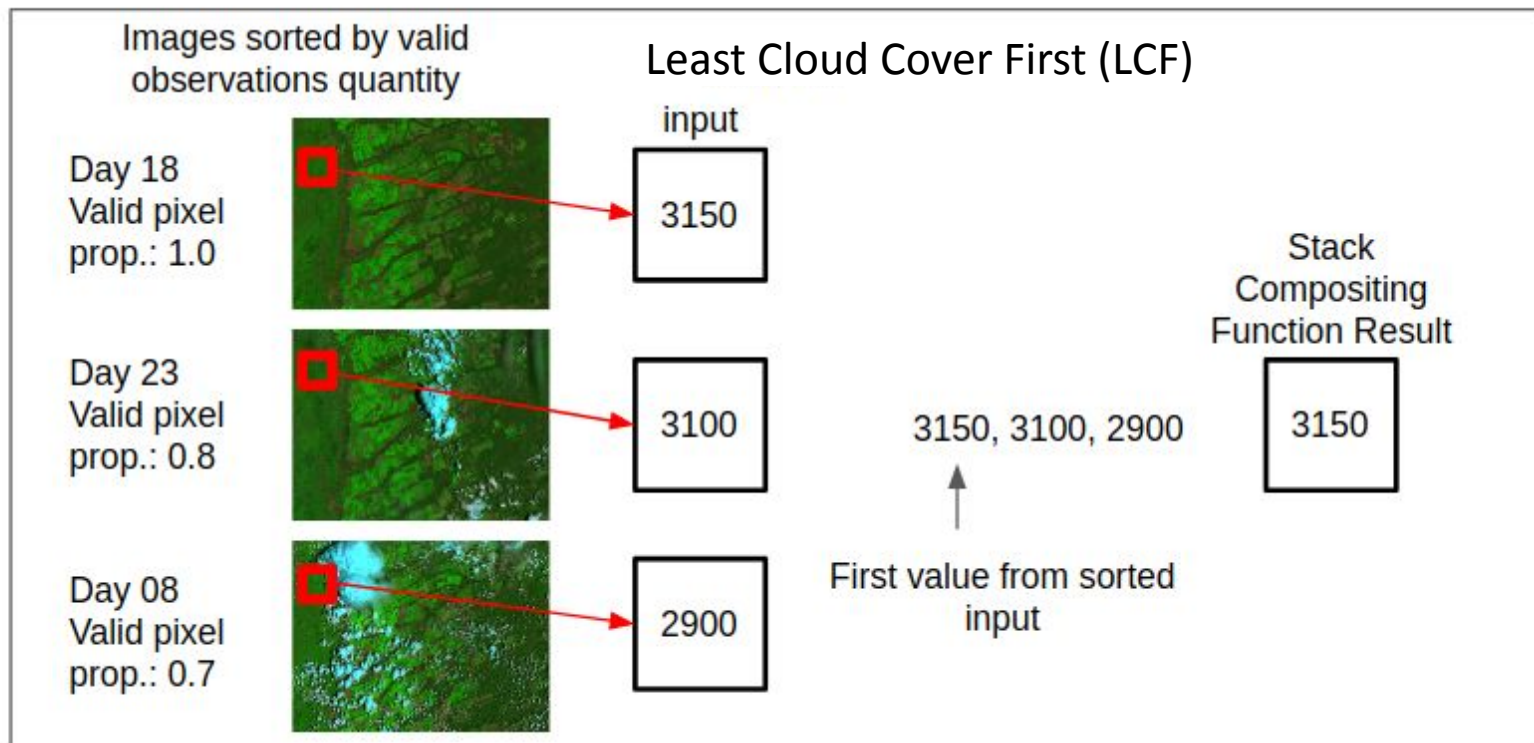
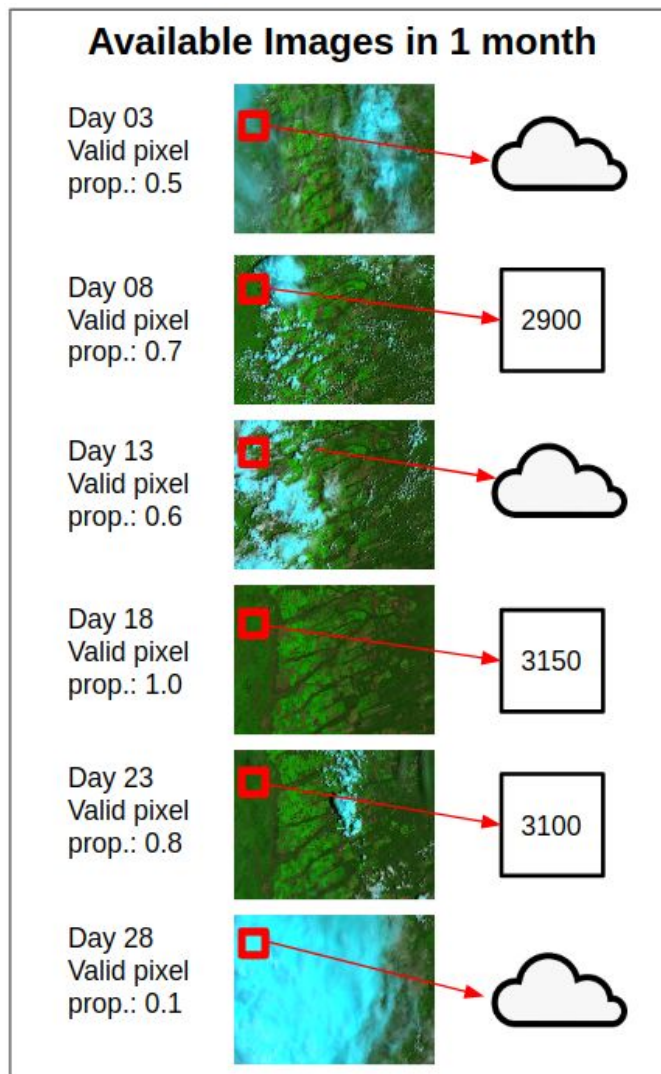
# Bandas dos Cubos de Dados

	Atributos	Descrição
Bandas Espectrais	Banda em Reflectância de Superfície	Imagens processadas para Reflectância de Superfície
	Provenance	Dia juliano indicando data de imageamento da imagem de origem do pixel
Bandas Extras	ClearOb	Número de observações livre de nuvem e sombras de nuvem no período composto
	TotalOb	Número total de observações no período composto
	Qualidade (CMask, Fmask)	Identificação da qualidade dos pixels no período (nuvem, sombra de nuvem, etc)
Índices Espectrais	NDVI	Normalized Difference Vegetation Index
	EVI	Enhanced Vegetation Index



FMASK	CMask	Descrição
0	0	clear land pixel
1	-	clear water pixel
2	-	cloud shadow
3	-	snow
4	4	cloud
255	255	no observation

# Temporal Compositing



\* Formerly known as Stack (STK)

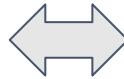
## Cube Builder

- Software to generate data cubes in large scale

Builder  
Local

Builder  
on AWS

- Open Source Software, free and available on GitHub



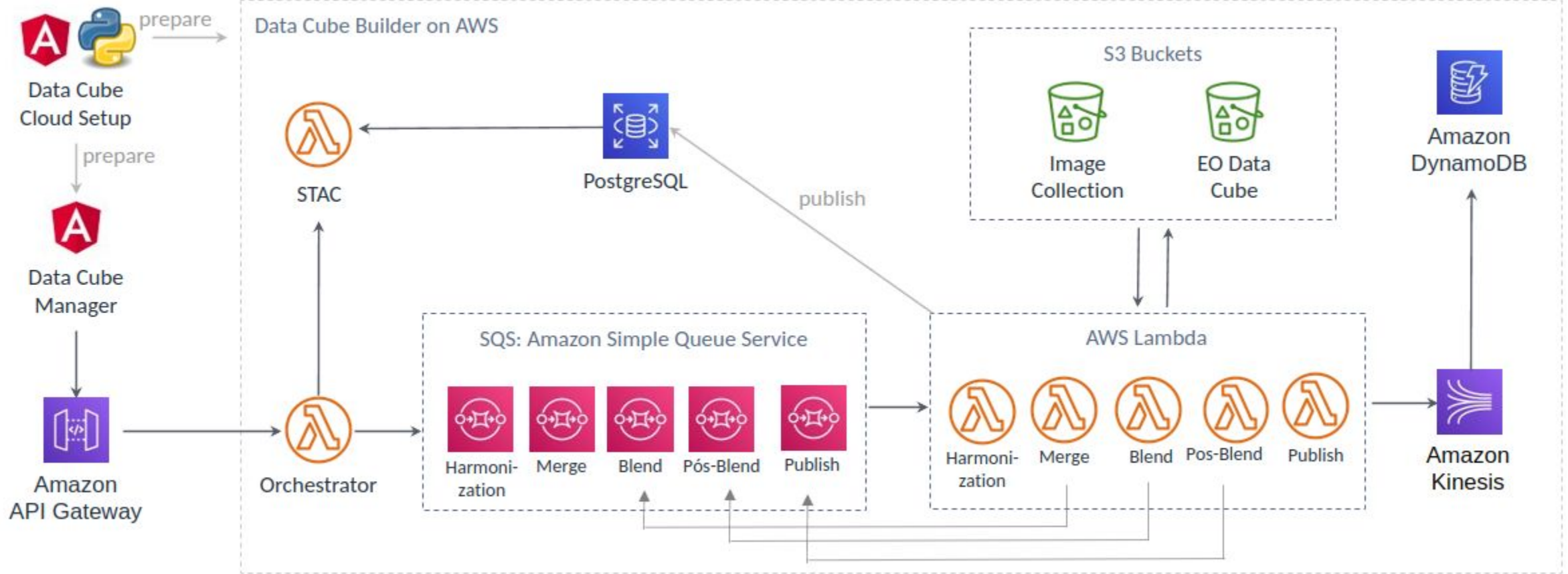
## Data Cube Manager

<https://github.com/brazil-data-cube/cube-builder>

<https://github.com/brazil-data-cube/dc-manager>



## Builder on AWS



# Products Sentinel-2

Sentinel-2/MSI (10 meters)

(V1)

Data cubes stack – 16 days

[2017, 2020]



**Grid:** BDC – Small

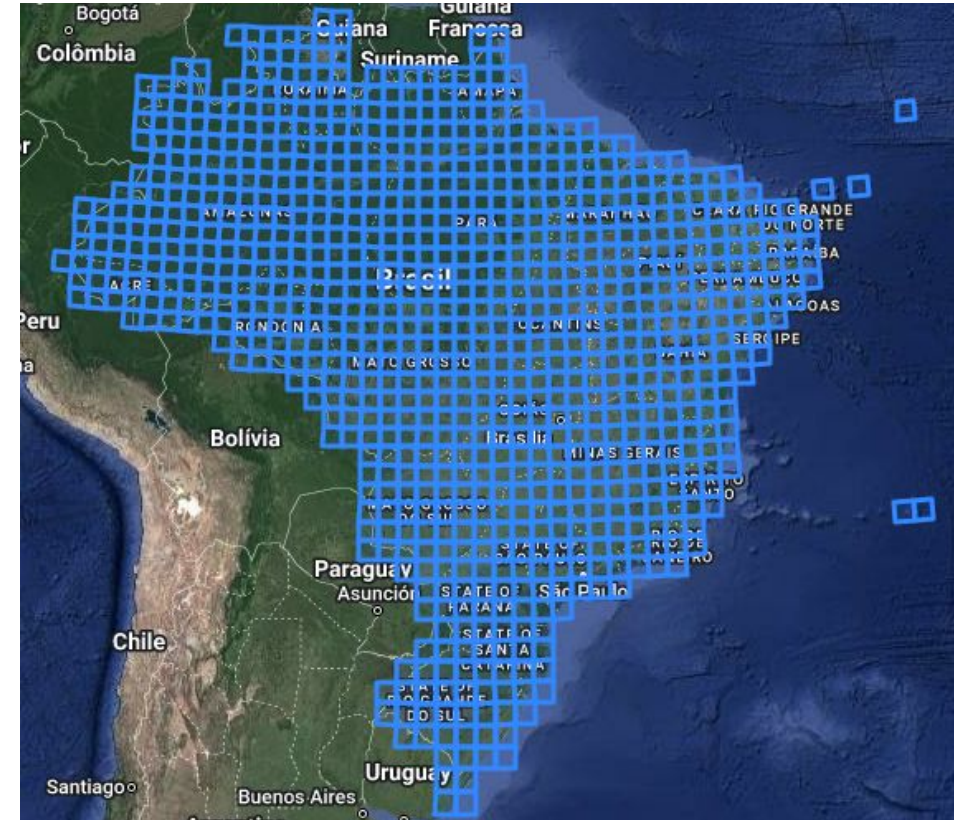
**Each tile:** 1.5 x 1 degree

Sentinel-2/MSI (10 meters)

(V2)

Data cubes Least Cloud First – 16 days

[2018\*, 2022]



**Grid:** BDC V2 – Small

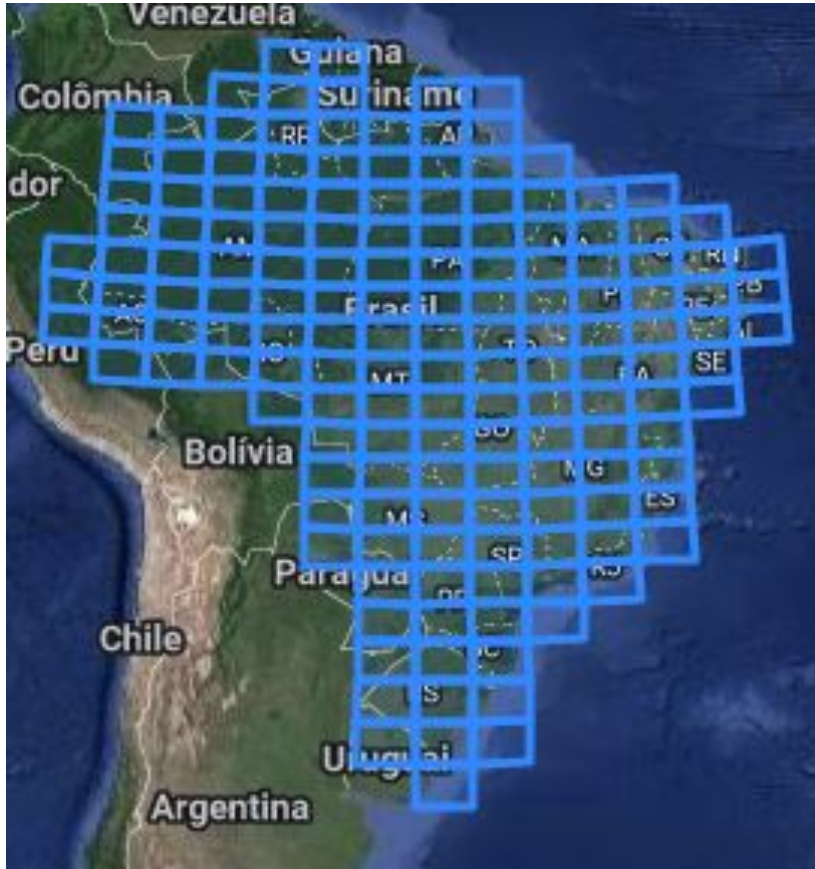
**Tile size:** 105600m x 105600m

\* In AWS (<https://registry.opendata.aws/brazil-data-cubes/>)

# Products Landsat

## Landsat-8/OLI (30 meters)

Data cubes stack – 16 days  
[08/2016 to 10/2021]



**Grid:** BDC – Medium  
**Each tile:** 3 x 2 degrees

## Landsat-8/OLI (30 meters) + Landsat-9/OLI2 (30 meters)

Will be reprocessed using Collection-2

\* In AWS (<https://registry.opendata.aws/brazil-data-cubes/>)

# Products MODIS

TERRA/MODIS (MOD13Q1) (250 meters)

Data cubes – 16 days  
[2000, 2023]



Grid: STG (MODIS)

AQUA/MODIS (MYD13Q1) (250 meters)

Data cubes – 16 days  
[2002, 2023]



Grid: STG (MODIS)

# Products CBERS-4 (v2)

## CBERS-4/MUX (20 meters)

Data cubes stack – 2 Months  
[2016, 2023]



**Grid:** BDC – Medium  
**Each tile:** 211.200m x 211.200m

## CBERS-4/AWFI (64 meters)

Data cubes stack – 16 days  
[2016, 2023]

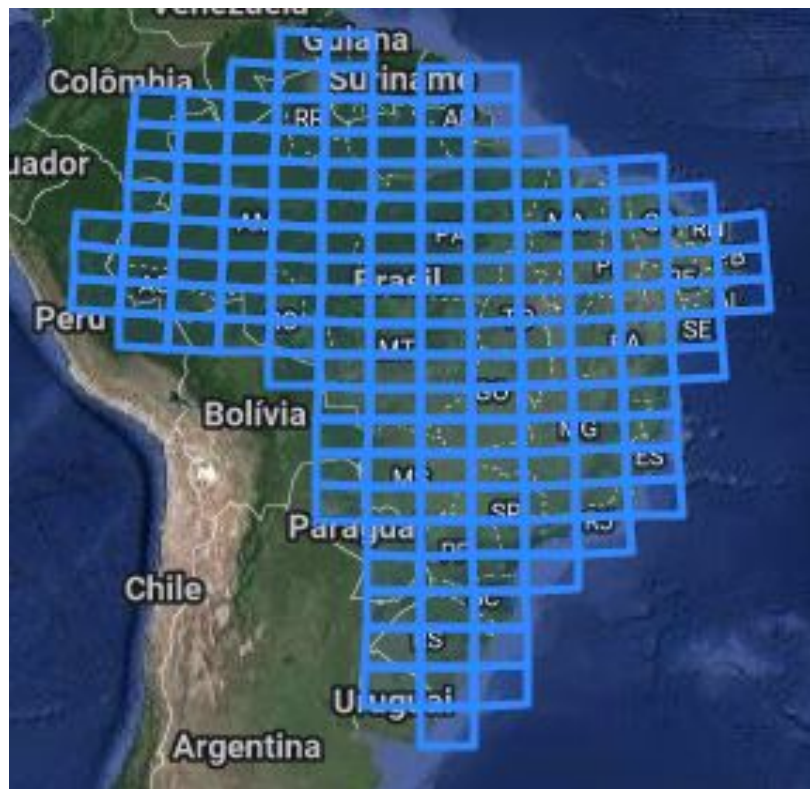


**Grid:** BDC – Large  
**Each tile:** 422.400m x 422.400m

# Products CBERS-4 (v1)

## CBERS-4/MUX (20 meters)

Data cubes stack – 1 Month  
[2016, 2022]



**Grid:** BDC – Medium  
**Each tile:** 3 x 2 degrees

## CBERS-4/AWFI (64 meters)

Data cubes stack – 16 days  
[2016, 2022]

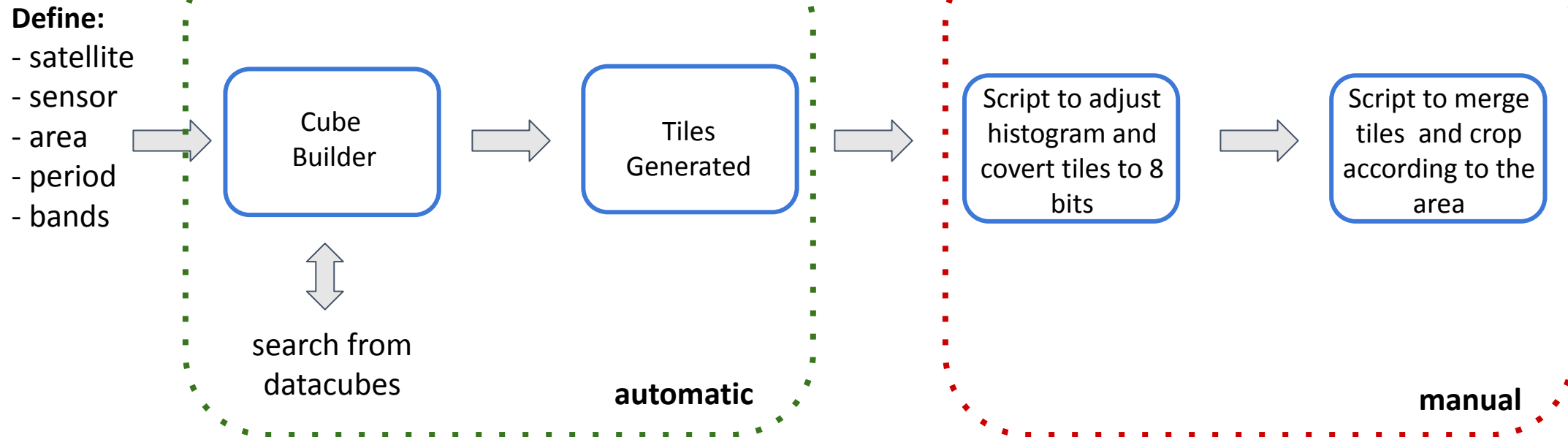


**Grid:** BDC – Large  
**Each tile:** 6 x 4 degrees

\* In AWS (<https://registry.opendata.aws/brazil-data-cubes/>)

## Institutional demands to create mosaics

- Create free cloud mosaics
- Use of BDC Cube-Builder to accomplish this task
- Capacity to create the product quickly



# Products Mosaics

## Landsat-8 - OLI - Brazil

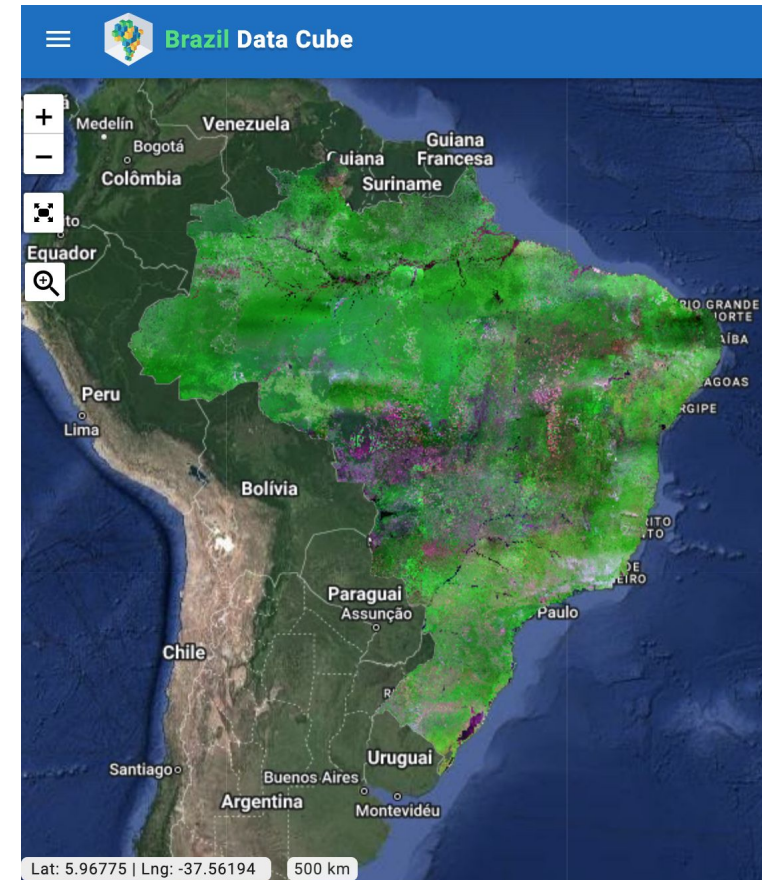
6 months  
[from July to December - 2017]



RGB: B6 -B5 -B4  
Resolution: 30m

## CBERS-4 WFI - Brazil

3 months  
[from May to June - 2020]



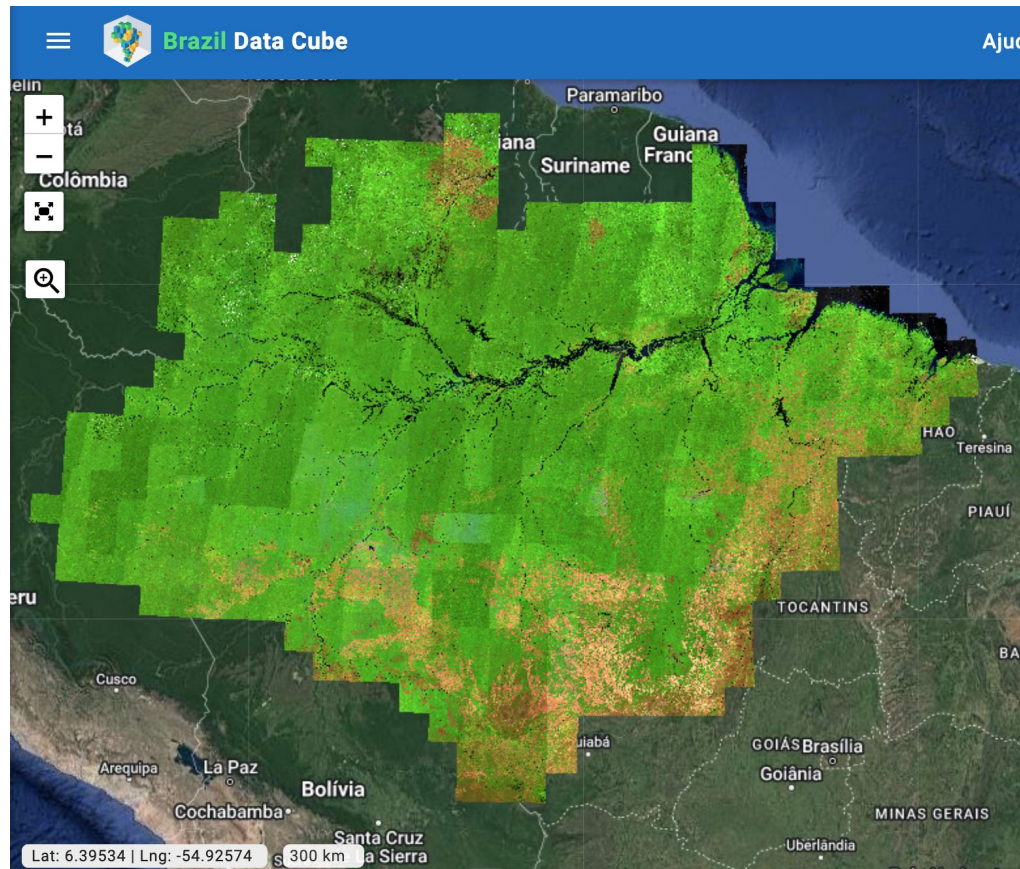
RGB: B15 - B16 - B13  
Resolution: 64m



# Products Mosaics

## Sentinel-2 - MSI - Amazonia

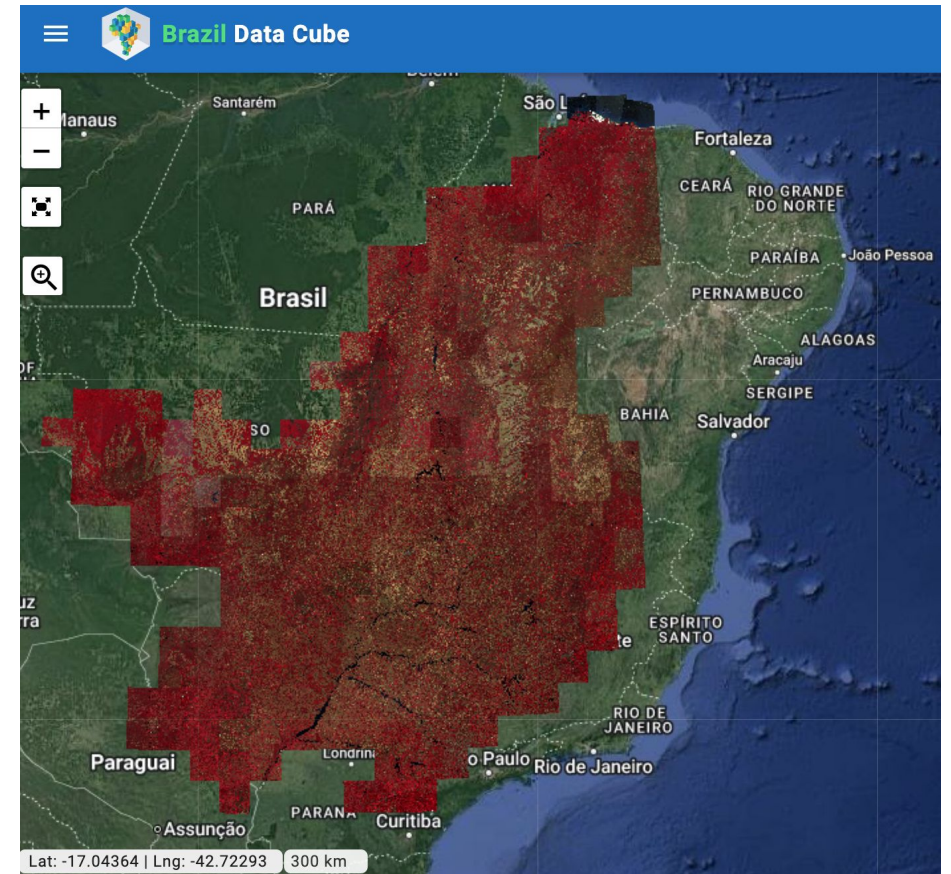
3 months  
[from June to August - 2022]



RGB: B11,B8A,B04  
Resolution: 10m

## Sentinel-2 - MSI - Cerrado

4 months  
[from June to September - 2022]

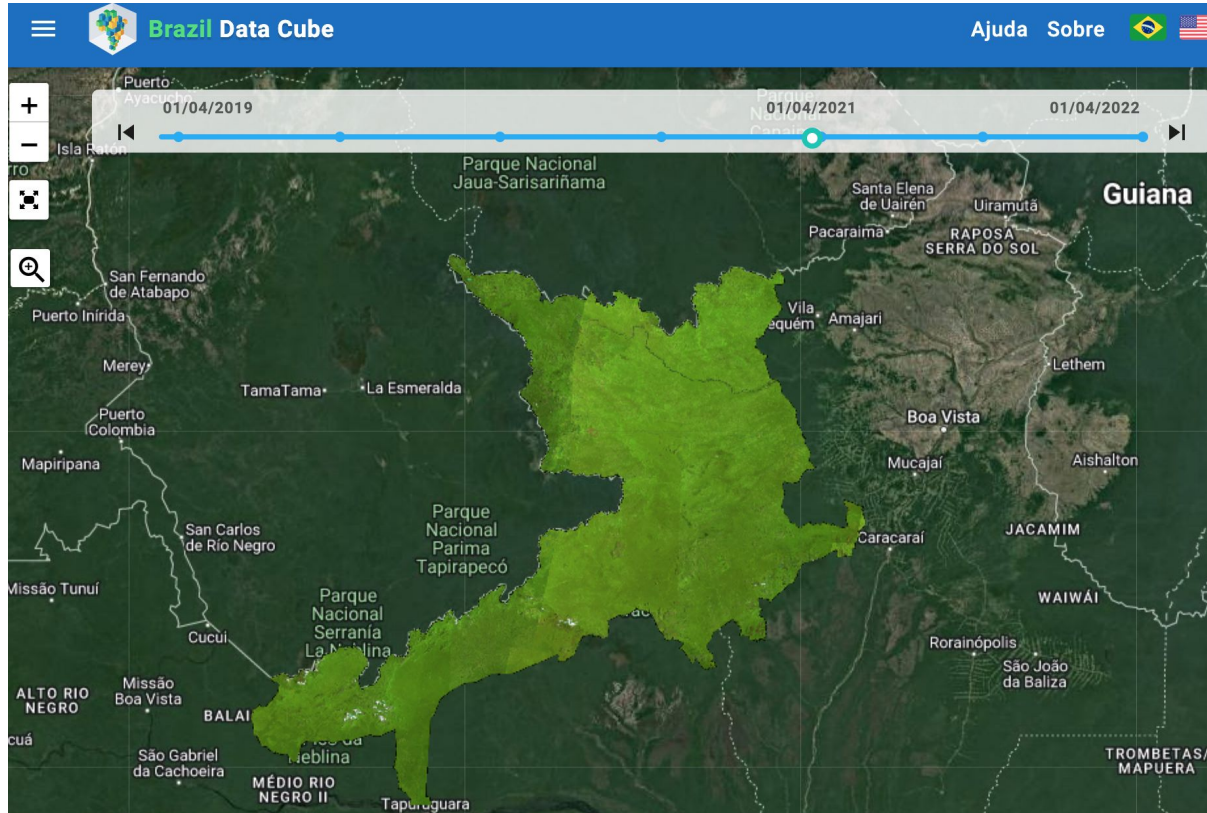


RGB: B08,B04,B03  
Resolution: 10m

# Products Mosaics

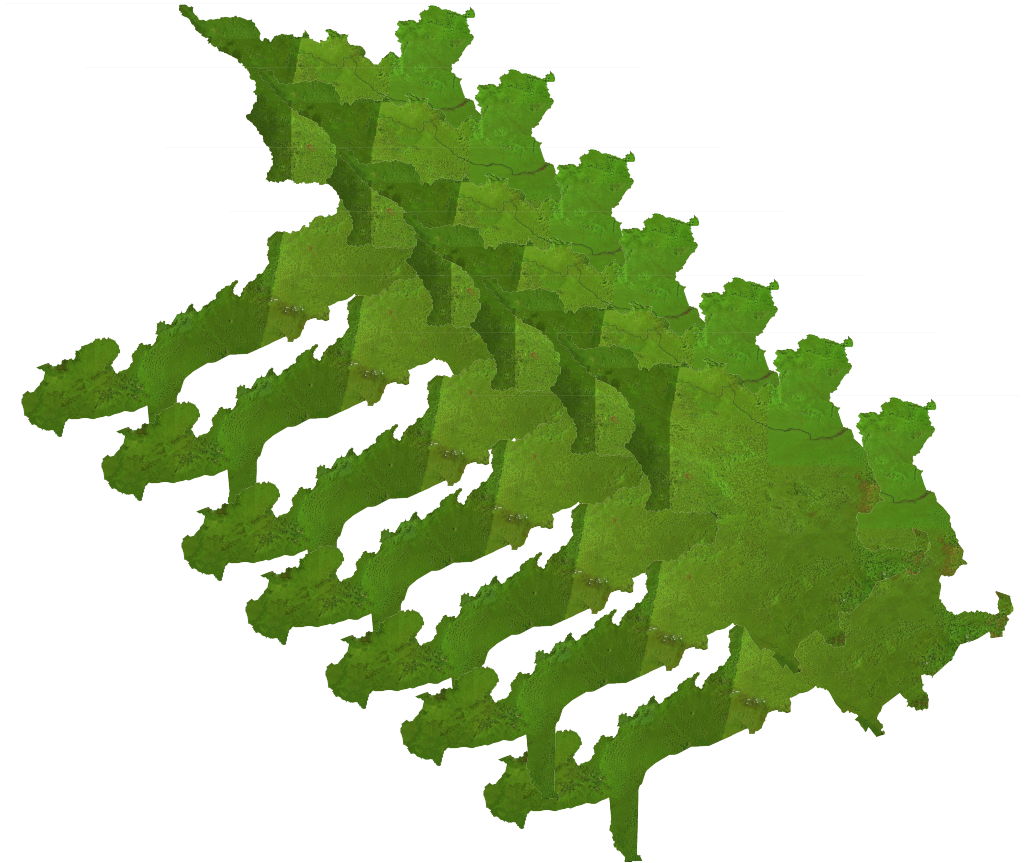
## Sentinel-2 - MSI - Yanomami Reserve

6 months  
[from April - 2019 to April - 2022]



RGB: B11,B08,B04  
Resolution: 10m

7 mosaics with 6 months of step





**BRAZIL DATA CUBE**  
brazildatacube.org



brazildatacube.org



brazildatacube.dpi.inpe.br/portal/explore

**XX SBSR**  
*Simposio Brasileiro de Sensoriamento Remoto*

**Rennan F. B.  
Marujo**

**Thank you!**

rennan.marujo@inpe.br  
brazildatacube@inpe.br

**FUNPO  
AMAZONIA**



MINISTÉRIO DA  
CIÊNCIA, TECNOLOGIA  
E INOVAÇÃO



@brazildatacube